

MINIBLUE®

Rotary Diaphragm 'Suction Lift' Condensate Pump

The Mini Blue is a 'rotary diaphragm' motor pump...so there is no filter to clog and no float to stick...airborne particles pass straight through...and there is no 'Brrrrrrrrrrrr' noise every time the pump activates...as happens with piston motor types.

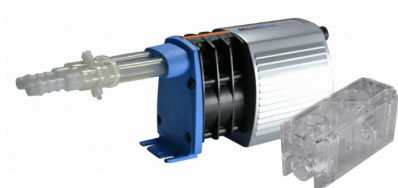
Mini Blue X87-504 TEMPERATURE SENSOR



- Ideal for air conditioning up to 6kW
- 2 Temperature Sensor Kit
- 21dBA -Silent Running
- 3 year warranty
- Max Flow: 6 litres p/hour @ zero lift
- Max Head: 8m (cut off-no flow)
- Max suction lift 1 meter but with extension
- = 6 meters
- Use **only** 6mm I.D. reinforced or thick wall clear tube
- Height: 67mm Length: 138mm Width: 58mm

Max Discharge:	8 m (cut-off – no flow)
Max Flow Rate:	6 l/hr
Electrical:	230V 50/60Hz

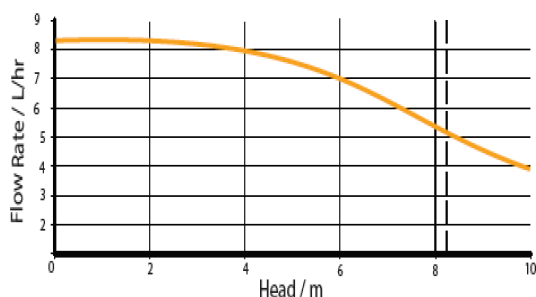
Mini Blue 'R' X87-509 RESERVOIR KIT



- Ideal for air conditioning up to 6kW
- Reservoir Kit
- 21dBA -Silent Running
- 3 year warranty
- Max Flow: 6 litres p/hour @ zero lift
- Max Head: 8m (cut off-no flow)
- Max suction lift 1 meter but with extension
- = 6 meters
- Use **only** 6mm I.D. reinforced or thick wall clear tube
- Height: 67.4mm Length: 157mm Width: 58mm

TIP: For the 'Quietest' Running... always select the Reservoir Model

**IMPORTANT: Use on A/C units up to 6kW...
No larger!**



Vertical (H) of discharge	Horizontal length of discharge			
	0m(l/h)	2m(l/h)	4m(l/h)	6m(l/h)
1m	6	5	4	3
5m	5.6	5	3	2
8m	5	4	2	0

NOTE: 5 METRE SENSOR EXTENSION IS AVAILABLE

**THE BEST SUCK PUMP IN
TOWN! ...NO Brrrrrrrrrr
NOISE!
NO FLOAT TO STICK!
NO FILTER TO CLOG!**

**IMPORTANT
INSTALLATION BY HVAC-R
PROFESSIONALS ONLY**